

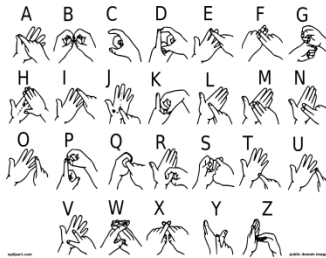
ASL 1645 ASL-BSL Comparative Analysis

Study Abroad London

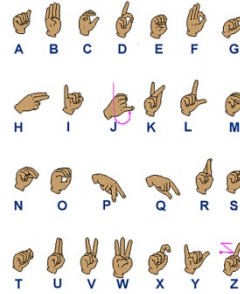


PURPOSE OF THE COURSE

The course is designed for students who are interested in acquiring through firsthand experience another sign language, British Sign Language and Deaf British culture. Students will receive 3 credits for this course and 3 credits for a separate course in which they will learn the basics of BSL.



and



Prerequisites:

This course requires completing American Sign Language 1 and American Sign Language 2 with a B or higher at University of Pittsburgh (if from another institute the visiting student and host institute must have approval) and apply it to real world experiences that will be available during the ASL International Field Project. This will be accomplished through signing skill assignments, Deaf interaction/participation, and observation.

FACULTY:

Department of Linguistics

Less-Commonly-Taught Center

Coordinator & Instructor: Debra L. Hast, M.Ed.

Email: dlhast@pitt.edu

Cathedral of Learning 2809C

412-304-4868 (WhatsApp)

LCTL Director: Claude Mauk

Email: cemauk@pitt.edu

Cathedral of Learning 2806

412-624-5943

412-874-7811 (WhatsApp)

COURSE OBJECTIVES

- Students will experience another culture by visiting a country where a different sign language is used
- Students will use both their receptive and expressive signing skills to learn about another sign language.
- Students will embrace another culture through observation and participation.
- Students will experience signing with members of the British Deaf community within an educational setting or community setting.
- Students will learn about differences and similarities between ASL and BSL as well as American Deaf culture and British Deaf culture.
- Students will improve their signing ability through intensive practice.
- Students will be voice off during the trip and will demonstrate the ability to behave appropriately within a Deaf culture.

Language Policy

Students in this class will develop sensitivity to the communication needs of Deaf people and will provide an accessible environment in the classroom. Students are required to sign and/or gesture to accommodate or provide accessibility for everyone (d/Deaf and hearing) in class or during any group activities especially when one of the instructors is present. Don't be afraid to use natural gestures or write down information if necessary, but **DO NOT use spoken English** in the classroom. Deaf people cannot hear what you are saying, speaking in the presence of deaf people is equivalent to whispering in front of someone or to make rude gestures when another person's back is turned, it is rude and simply unacceptable. Your instructors will encourage you to expand your ability to understand and produce a visual language but not to use your voice. If you do not understand the instructor, raise your hand and ask in ASL for clarification. If you repeatedly speak in class, you will be asked to meet with the instructor. If this continues to be a problem, the participation grade will seriously be affected.

In case of a crisis or an emergency, any kind of communication is acceptable. If an instructor or CAPA personnel chooses to initiate a communication in English, you can use English in return.



and



We recommend the use of WhatsApp for immediate and/or emergency communication while in London. Our US cell phone numbers are listed above. If you set up WhatsApp while in the US, you can add our numbers to your contacts and then be able to message us over Wi-Fi and (while in the US) cell networks. If you set up WhatsApp with a UK phone or SIM card while in the UK, you will need to add a +1 to the phone number because you will be on the UK network. Note that setting up WhatsApp requires access to text/SMS messages. If you do not plan to get a UK SIM card, you will need to set up WhatsApp before you leave the US. If you set up WhatsApp in the US with your US SIM card, and then get a UK SIM card, WhatsApp will still work in the UK but will be connected to your US phone number. WhatsApp will also be a good way for your parents and friends to stay in touch with you. It's a small once a year fee to use the app and there is no charge for sending messages.

If you will be using a phone in the UK, please give us your number in case we need to reach you in emergencies.

We will expect you to respond promptly to messages on WhatsApp.



Course Grading: Assignments:

The course grade earned is based on the following:

- 20% - Professionalism
- 20% - In-Country Participation
- 20% - Journal
- 20% - Discussion Leaders
- 20% - Individual Final Report
- 100% - Total



Grading Scale:

A+	98-100	B	84-86	C-	70-73
A	94-97	B-	81-83	D	66-69
A-	90-93	C+	78-80	F	0-65
B+	87-89	C	74-77		

Coursework



and Assignments:

1. *Professionalism (20%)*

Students should present themselves appropriately, especially when visits to sites are in progress. Casual clothing in class or during other class activities is fine, but that clothing should be neat and not too revealing. Students will not drink alcohol while class activities are in progress, even when those activities take place outside the classroom. Professionalism also relates to communicating with instructors. Being unresponsive to messages via email or WhatsApp is problematic and may impact your grade.

2. *In-Country Participation (20%)*

The field study component of the course will encompass one month abroad. Students will be evaluated on the basis of: (a) familiarity with the course materials; (b) quality of contributions; (c) critical and creative approaches course content; and (d) respect for the views of others (especially hosts and cultural norms). Note that a lack of quality sleep or an overabundance of drinking will negatively impact your ability to participate. We will notice. During class activities in or out of the classroom, we will expect you to be an active participant. Students should not go off by themselves during out of the classroom activities.

3. *Journal (20%)*

500-600 word entries will be written daily during the in-country component of the course. Entries must be based on personal reflection on cultural and language abroad. The entire journal will be typed and submitted at the end of June. This is a written work turned in for a grade. You must spell check and proofread. Please include all journal entries in a single document for our convenience. You should write an entry for each day that there is a course required event.

Journal entries will be evaluated on the basis of: (a) the completion and length of each post; (b) reference to language and/or culture in each entry; and (c) the ability to recognize and evaluate relevant issues.

4. *Discussion Leaders (20%)*

Students will lead discussions of course materials for some topics. These discussion leaders will create questions for discussion and activities related to course material. Students will be assigned to specific dates and sessions soon after arrival in London. Students will be given a set of materials to get started and may find additional materials on their topics. Students will work together outside of class hours to prepare discussion questions and activities for their day. Each student led session will have two or more discussion leaders. Each group of discussion leaders must meet with one of the instructors at least 24 hours before the class session they will lead.

5. *Final Report (20%)*

The final output from the class is an individual 7-8 page analysis report that focuses on a particular issue of interest to the student. Students must seek approval of the topic of focus before the end of the second week in London. After returning to the US, students can search for supporting material to augment their experience in London. Relevant

issues should relate to comparisons of the structure of the two languages or the Deaf cultures in the two countries. Anticipated due date: June 30th

- Students are required to submit a paper idea at the beginning of the second week of the trip.
- Students are required to submit a list of supporting ideas for their paper by the end of the third week of the trip
- Formatting should be: double spaced, 1 inch margins, 12-point Times New Roman font.
- Cite all external sources used both in text and with a separate reference page (an alternative would be to use footnotes).



Religious Holidays

If you need to miss class due to a religious holiday anytime during the semester, the University requires that you let me know about your planned absence as soon as possible. Absences for religious holidays will not be held against you, and you will be allowed to make up all work you miss due to your absence.



If you have a disability for which you are or may be requesting an accommodation, you are encouraged to contact me and Disability Resources and Services, 216 William Pitt Union, (412) 648-7890 (voice) or (412) 383-7355 (TTY), as early as possible in the term. DRS will verify your disability and determine reasonable accommodations for this course.



Academic Honesty

You are expected to do your own work and acknowledge use of anyone else's work or ideas. Academic dishonesty includes: (a) copying another student's work or letting another student copy your work and (b) copying passages or ideas from another source and passing them off as your own, i.e. without properly referencing them. When scholastic dishonesty is suspected, I will turn the matter over to the Provost's Office for resolution.

For more information see: <http://www.pitt.edu/~provost/aistudcode1.html>.

Schedule: PENDING. You can anticipate classes Monday through Thursday in morning and afternoon as well as class excursions outside of class time.